

Sportsplex Operators and Developers Association

**SODA**  
"Since 1981"



Smiles, Wisdom &  
Editorial Comments  
**SPECIAL REPORTS**

NY Regional Office:  
Box #24617\*Westgate  
Rochester, NY 14624-0617  
\*( A Kansas 501C3 Corporation )\*

Visit Us At Our Website @:  
[www.SportsplexOperators.com](http://www.SportsplexOperators.com)

~ Baseball ~ The Sports Field Planning Guide, Volume III, Issue 1 ~ Soccer ~



Multi-Sports Facilities



**SODA**



~ Softball ~

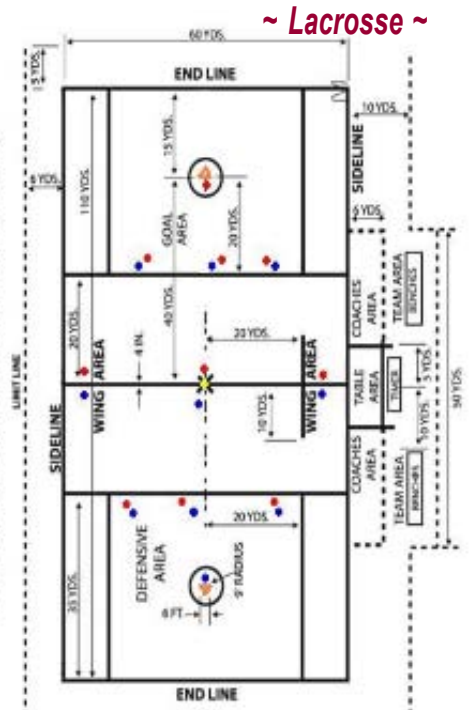


~ Football ~

# Sportsfields Planning Guide



Youth and High School Men's Lacrosse Field of Play



**SODA**  
"Looking To The Future"  
Sportsplex Operators & Developers Association





▼ Virginia Tech — Blacksburg, VA ▲ Citi Field — Home of the New York Mets · Flushing, NY ▼ Des Moines East High School Softball — Des Moines, IA ▲ Veterans Park — Rogers, AR



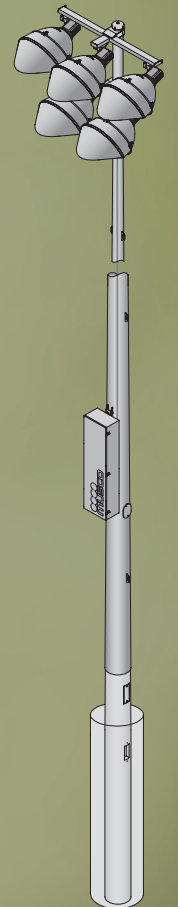
# ALL THE LIGHT AT HALF THE OPERATING COST NOT ALL THE CHEERING WILL BE FOR THE PLAYERS

## Light-Structure GREEN™

Light-Structure Green™ reduces your sports-lighting operating cost by 50% or more with less energy consumption, cuts spill light by 50%, and eliminates 100% of your maintenance costs for the next 25 years. Constant Light™ provides target light levels for 25 years. We guarantee it!

From foundation to poletop, Light-Structure Green makes your sports-lighting projects fast, trouble-free, and now more affordable than ever. Call, email, or check our website today for details.

**Unequaled performance . . .  
for your budget, for the environment.**

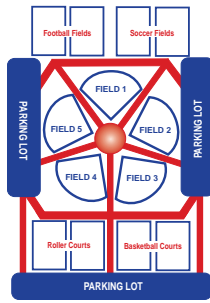


**We Make It Happen.®**

**800-825-6030**

**www.musco.com**

e-mail: [lighting@musco.com](mailto:lighting@musco.com)



“Looking To The Future”  
Sportsplex Operators & Developers Association

**National Amateur Sports  
Insurance Program**

Teams, Leagues & Tournaments (Youth & Adult)  
Available 01-01-2011 to 12-31-2011



**Rate Reductions!**

**New for 2011:**

EFFECTIVE 01-01-2011 - ALL COVERAGES FOR TEAMS & LEAGUES, UMPIRES AND FIELD OWNERS EXPIRE 1 YEAR FROM EFFECTIVE DATE OF COVERAGE.

(Camps & Tournaments coverage is for the specific dates reported on your application.)



**FOR FASTEST SERVICE APPLY ONLINE:  
[www.amateursportsinsurance.com](http://www.amateursportsinsurance.com)**



**SODA**

P.O. Box #24263, Westgate Station  
Rochester, NY 14624-0263  
Phone: (585) 426-2215  
Fax to: (800) 878-4308

Please refer all payment or credit card questions to SODA at 1-585-426-2215

Refer all insurance coverage and claim questions to Sadler & Company at  
1-800-622-7370 or  
Email: [soda@sadlersports.com](mailto:soda@sadlersports.com)



**publishing co.**  
established 1912

- commercial printing
- digital printing
- bulk mailing
- graphic design
- full bindery services
- fulfillment

262 North Cedar Street • Hazleton, PA 18201  
p: 570.454.5911 f: 570.454.3120 e: [info@citpublish.com](mailto:info@citpublish.com)



ALL THE LIGHT AT  
**HALF THE OPERATING COST**  
NOT ALL THE CHEERING WILL BE  
**FOR THE PLAYERS**

**Light-Structure**  
**GREEN™**

Light-Structure Green™ reduces your sports-lighting operating cost by 50% or more with less energy consumption, cuts spill light by 50%, and eliminates 100% of your maintenance costs for the next 25 years. Constant Light™ provides target light levels for 25 years. We guarantee it!

**Unequaled performance . . .  
for your budget, for the environment.**



**We Make It Happen.®**

**800-825-6030**

**www.musco.com**

e-mail: [lighting@musco.com](mailto:lighting@musco.com)

